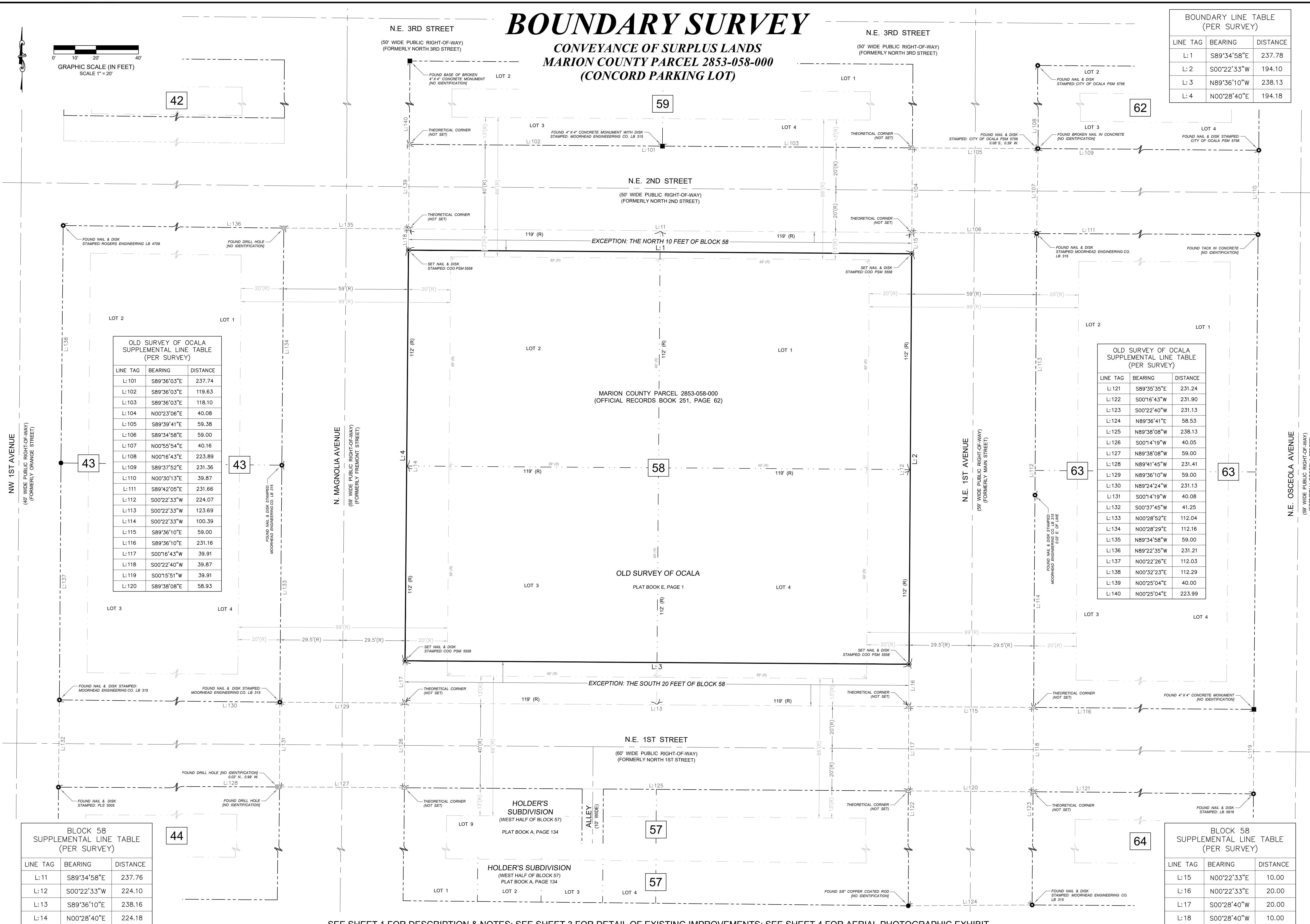
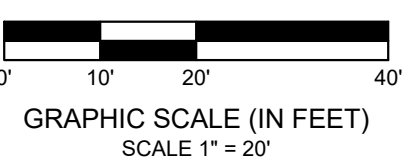


BOUNDARY SURVEY

CONVEYANCE OF SURPLUS LANDS
MARION COUNTY PARCEL 2853-058-000
(CONCORD PARKING LOT)

BOUNDARY LINE TABLE (PER SURVEY)		
LINE TAG	BEARING	DISTANCE
L:1	S89°34'58"E	237.78
L:2	S00°22'33"W	194.10
L:3	N89°36'10"W	238.13
L:4	N00°28'40"E	194.18



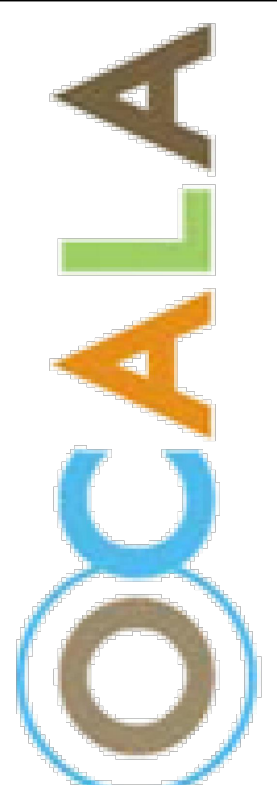
OLD SURVEY OF OCALA SUPPLEMENTAL LINE TABLE (PER SURVEY)		
LINE TAG	BEARING	DISTANCE
L:101	S89°36'03"E	237.74
L:102	S89°36'03"E	119.63
L:103	S89°36'03"E	118.10
L:104	N00°23'06"E	40.08
L:105	S89°39'41"E	59.38
L:106	S89°34'58"E	59.00
L:107	N00°55'54"E	40.16
L:108	N00°16'43"E	223.89
L:109	S89°37'52"E	231.36
L:110	N00°30'13"E	39.87
L:111	S89°42'05"E	231.66
L:112	S00°22'33"W	224.07
L:113	S00°22'33"W	123.69
L:114	S00°22'33"W	100.39
L:115	S89°36'10"E	59.00
L:116	S89°36'10"E	231.16
L:117	S00°16'43"W	39.91
L:118	S00°22'40"W	39.87
L:119	S00°15'51"W	39.91
L:120	S89°38'08"E	58.93

OLD SURVEY OF OCALA SUPPLEMENTAL LINE TABLE (PER SURVEY)		
LINE TAG	BEARING	DISTANCE
L:121	S89°35'35"E	231.24
L:122	S00°16'43"W	231.90
L:123	S00°22'40"W	231.13
L:124	N89°36'41"E	58.53
L:125	N89°38'08"W	238.13
L:126	S00°14'19"W	40.05
L:127	N89°38'08"W	59.00
L:128	N89°41'45"W	231.41
L:129	N89°36'10"W	59.00
L:130	N89°24'24"W	231.13
L:131	S00°14'19"W	40.08
L:132	S00°37'45"W	41.25
L:133	N00°28'52"E	112.04
L:134	N00°28'29"E	112.16
L:135	N89°34'58"W	59.00
L:136	N89°22'35"W	231.21
L:137	N00°22'26"E	112.03
L:138	N00°32'23"E	112.29
L:139	N00°25'04"E	40.00
L:140	N00°25'04"E	223.99

BLOCK 58 SUPPLEMENTAL LINE TABLE (PER SURVEY)		
LINE TAG	BEARING	DISTANCE
L:11	S89°34'58"E	237.76
L:12	S00°22'33"W	224.10
L:13	S89°36'10"E	238.16
L:14	N00°28'40"E	224.18

BLOCK 58 SUPPLEMENTAL LINE TABLE (PER SURVEY)		
LINE TAG	BEARING	DISTANCE
L:15	N00°22'33"E	10.00
L:16	N00°22'33"E	20.00
L:17	S00°28'40"W	20.00
L:18	S00°28'40"W	10.00

SEE SHEET 1 FOR DESCRIPTION & NOTES; SEE SHEET 3 FOR DETAIL OF EXISTING IMPROVEMENTS; SEE SHEET 4 FOR AERIAL PHOTOGRAPHIC EXHIBIT



PREPARED BY:
CITY OF OCALA
CITY ENGINEER'S OFFICE
SURVEY DIVISION

1605 NE 30TH AVENUE - BUILDING 700A - OCALA, FLORIDA 34470
(352) 351-4772 (VOICE) - (352) 351-4728 (FAX)

PREPARED FOR:
GROWTH MANAGEMENT
DEPARTMENT

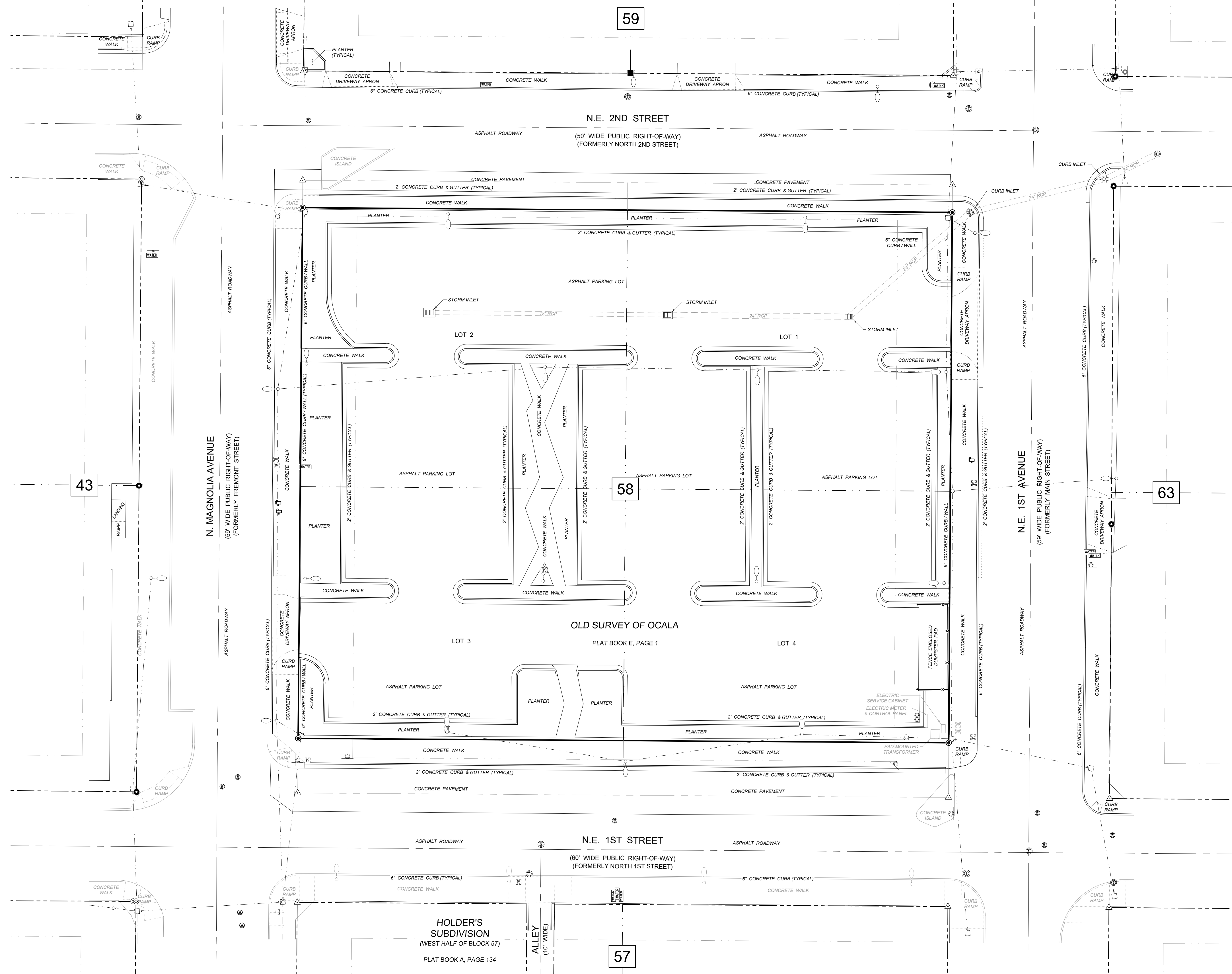
"BOUNDARY DATA SHEET"

PROJECT DATA:		REVISIONS:	
SECTION: 17	TOWNSHIP: 15 S	NO.:	DATE & DESCRIPTION:
DRAWN: RKR	CHECKED: RKR	22 E	
DATE: 09/02/2022	SCALE: 1" = 20'		
FIELD BOOK: 831	FIELD BOOK: 30		
HORIZONTAL DATUM: NAVD83	VERTICAL DATUM: NAVD83		
FILE NUMBER: 22-007298.01	WORK ORDER: 22-007298		

SHEET 02 OF 04

BOUNDARY SURVEY

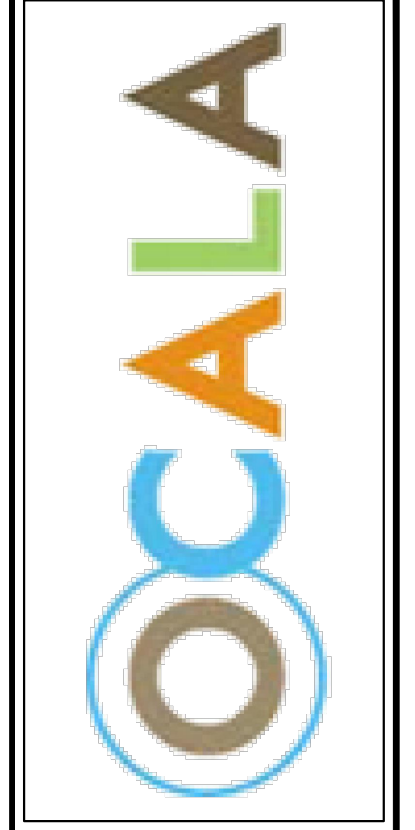
CONVEYANCE OF SURPLUS LANDS
MARION COUNTY PARCEL 2853-058-000
(CONCORD PARKING LOT)



- ABBREVIATIONS:
- N = NORTH
 - E = EAST
 - S = SOUTH
 - W = WEST
 - (P) = DATA PER REFERENCE TO PLAT
 - (R) = DATA PER REFERENCE TO RECORD INFORMATION
 - L# = REFERENCE TO A LINE DATA TABLE
 - RCP = REINFORCED CONCRETE PIPE

- SYMBOLGY LEGEND:
- = BOLLARD
 - = SEWER CLEAN-OUT
 - = FIRE HYDRANT
 - = LIGHT POLE (METAL / WOOD)
 - = LIGHT POLE, APPROXIMATE - SEE NOTE 13
 - = MAILBOX
 - = MANHOLE - DRAINAGE
 - = MANHOLE - SANITARY SEWER
 - = MANHOLE - TELEPHONE
 - = METER - WATER
 - = POWER POLE
 - = SIGNAL STRAIN POLE
 - = SIGN - SINGLE-POLE
 - = VALVE COVER - WATER
 - = PULL BOX: USE VARIES
 - = PULL BOX: APPROXIMATE - SEE NOTE 13
 - 63 = BLOCK IDENTIFICATION

- LINESTYLE LEGEND:
- = BOUNDARY LINE
 - - - = RIGHT-OF-WAY LINE
 - - - = RIGHT-OF-WAY LINE - FORMER
 - - - = CENTERLINE
 - - - = LOT LINE
 - - - = TIE LINE
 - - - = UTILITY LINE - AERIAL
 - - - = GRADE BREAK
 - - - = UPDATED IMPROVEMENT; SEE NOTE 13



PREPARED BY:
CITY OF OCALA
CITY ENGINEER'S OFFICE
SURVEY DIVISION
1605 NE 20TH AVENUE - BUILDING 700A - OCALA, FLORIDA 34470
(352) 351-4772 (VOICE) - (352) 351-4728 (FAX)

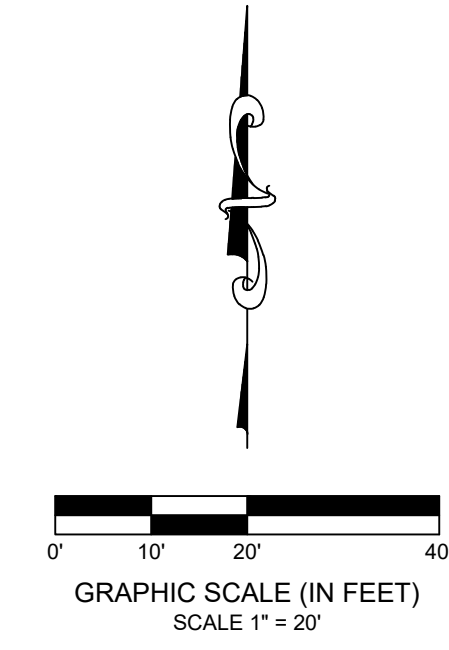
PREPARED FOR:
GROWTH MANAGEMENT
DEPARTMENT
"IMPROVEMENTS DETAIL SHEET"

PROJECT DATA:		REVISIONS:	
SECTION:	TOWNSHIP:	NO.:	DATE & DESCRIPTION:
17	22 E	22 E	
DRAWN:	15 S	RANGE:	
RRR	15 S	RKR	
CHECKED:			
DATE:		SCALE:	
09.02.2022		1" = 20'	
FIELD BOOK:		FIELD BOOK:	
831		NAVDB8	
HORIZONTAL DATUM:		VERTICAL DATUM:	
NAVDB8		NAVDB8	
FILE NUMBER:		22-007298.01	
WORK ORDER:		22-007298	

SEE SHEET 1 FOR DESCRIPTION & NOTES; SEE SHEET 2 FOR BOUNDARY DATA; SEE SHEET 4 FOR AERIAL PHOTOGRAPHIC EXHIBIT

BOUNDARY SURVEY

CONVEYANCE OF SURPLUS LANDS
MARION COUNTY PARCEL 2853-058-000
(CONCORD PARKING LOT)



PREPARED BY:
CITY OF OCALA
CITY ENGINEER'S OFFICE
SURVEY DIVISION
1635 NE 30TH AVENUE - BUILDING 700A - OCALA, FL 34703
(352) 351-6772 (VOICE) - (352) 351-6728 (FAX)

PREPARED FOR:
GROWTH MANAGEMENT
DEPARTMENT
"AERIAL PHOTOGRAPHIC EXHIBIT"

PROJECT DATA:		REVISIONS:	
SECTION: 17	TOWNSHIP: 15 S	RANGE: 22 E	NO.:
DRAWN: RKR	CHECKED: RKR	SCALE: 1" = 20'	DATE & DESCRIPTION:
DATE: 09/02/2022	SCALE: 1" = 20'	FIELD BOOK: 30	BY:
FIELD BOOK: 831	FIELD BOOK: 30	HORIZONTAL DATUM: NAVD83	
HORIZONTAL DATUM: NAD83	VERTICAL DATUM: NAVD83	FILE NUMBER: 22-007298.01	
FILE NUMBER: 22-007298.01	WORK ORDER: 22-007298		

SEE SHEET 1 FOR DESCRIPTION & NOTES; SEE SHEET 2 FOR BOUNDARY DATA; SEE SHEET 3 FOR DETAIL OF EXISTING IMPROVEMENTS
AERIAL PHOTOGRAPHY SHOWN HEREON OBTAINED FROM IMAGERY INVENTORY MAINTAINED IN THE FLORIDA DEPARTMENT OF TRANSPORTATION'S A+PLUS (AERIAL PHOTO LOOK-UP SYSTEM) AND REPRESENTS CONDITIONS AS THEY EXISTED IN EARLY 2021

\\ocallapw02\GIS\Projects\Survey\Work\OCOCES\Survey\Growth Management\2022\007298 Concord Parking Lot\04\02-007298.01.dwg, 11/23/2022 9:59:33 AM